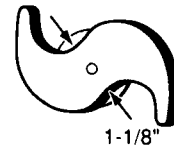
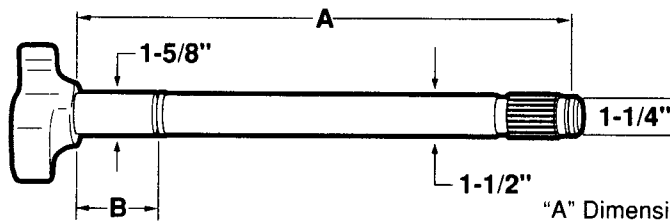


BRAKE CAMSHAFTS - TRAILER

Spicer "XL" And "Xtra-Life" With 1-5/8" Journal



LEFT HAND

"A" Dimension: under head to beginning of lock ring groove

1-1/2" Dia. - 28 Spline

| LH | RH | A | B | C | NOTES | REPLACES | |
|-------|-------|-----------|--------|---|-----------------------|-----------------|-----------------|
| C314L | | 26-1/4" | 2-1/4" | - | Camshaft Kit B8792 | Batco 04-562632 | Meritor |
| | | | | | | BWP | Midland CS41434 |
| | | | | | | Euclid | Spicer 17-937 |
| | | | | | | Leland L-3379 | M16WKL25-264 |
| | C315R | 26-1/4" | 2-1/4" | - | Camshaft Kit B8792 | Batco 04-562631 | Meritor |
| | | | | | | BWP | Midland CS41435 |
| | | | | | | Euclid | Spicer 17-936 |
| | | | | | | Leland L-3378 | M16WKR25-264 |
| C737L | | 26-15/16" | 2-1/4" | - | Camshaft Kit B8792 | Batco 04-562702 | Meritor R607233 |
| | | | | | | BWP M-3141L | Midland |
| | | | | | | Euclid E-9737 | Spicer 17-941 |
| | | | | | | Leland L-3407 | M16WKL25-271 |
| | C738R | 26-15/16" | 2-1/4" | - | Camshaft Kit B8792 | Batco 04-562701 | Meritor R607234 |
| | | | | | | BWP M-3141R | Midland |
| | | | | | | Euclid E-9738 | Spicer 17-940 |
| | | | | | | Leland L-3406 | M16WKR25-271 |